

## Applications:

- Forestry
- Farming
- Municipal
- Pipeline

## Functions:

- Agricultural stone crushing
- Road works
- Alternative to road grading
- After pipeline construction
- Recycling and reduction of construction debris.



## Technical Description:

The **USZ600 Stone Crusher** is a three-point linkage attachment suitable for a number of carriers. A gearbox divides the power to drive shafts located on each side of the body. Final drive to the rotor is via power belts. The USZ600 is equipped with 30 fixed carbide-tipped hammers, which can easily be replaced, individually.

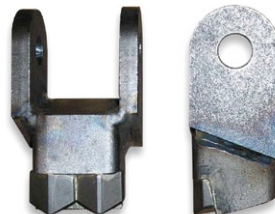
A synchronisation system controls the gearbox, ensuring smooth transmission of power to the crusher unit.

With the standard model a hydraulically-operated deep leading device is mounted over the wheels, enabling the crusher to adapt to different environmental conditions.

## Options:

Available in different working widths. Rotor can be driven hydraulically or with mounted motor.

Technical Data:		
PTO Power	134–187 kW	180–250 hp
Working width (standard)	2300 mm	
Drive speed	1000 rev/min	
Weight	3710 kg	



753.05.3.71 stonecrusher tool