



POWERFUL MACHINES FOR TOUGH JOBS

Fecon FTX130/140 FM



Big Power in a Small Package

AHWI Fecon Tracked Mulchers

At AHWI Australia, we put the demands of customers first. Our extensive range of equipment is designed and built for maximum efficiency and productivity, with ease of maintenance and minimum downtime.

The Fecon FTX130 and FTX140 FM tracked forestry mulchers feature powerful diesel engines, durable undercarriage, dual range gearboxes and impressive manoeuvrability. Most importantly, massive usable hydraulic power enables the FTX 130/140 to tackle the kinds of heavy duty work which is frequently out of range of skid steer mulchers. Coupled with highly efficient hydraulic cooling, these machines are built for working at peak performance all day, in all conditions.

With today's emphasis on environmentally responsible methods of managing vegetation, the Fecon FTX130/140 models are ideal for jobs like land clearing, forestry work, wetland restoration, agricultural ground preparation and especially firebreak establishment in urban/ woodland areas.



Mulching Head

AHWI FM500HSS Wide Body Hydraulic Mulcher

Fitted to both Fecon FTX 130 and 140 machines is the wide (1750 mm cutting width) version of AHWI's popular FM500HSS mulching head.

With 6000 psi of hydraulic power (on the high pressure circuit), the mulcher is capable of working hard and is less likely to 'lug down' when working in arduous conditions.

The hydraulically operated pushbar gives the operator more control over the vegetation being mulched, and is available with or without teeth, depending on the application.

Tool configuration has been specifically developed to allow better mulching with fewer tools – about half the number of the competition. That means less cost for tool replacement. The tools are secured with high tensile bolts allowing tools to be replaced easily and individually. AHWI toolholders are made bigger and stronger too, avoiding costly breakages.

The FTX130/140 can also be fitted with a hydraulically driven stump grinding head.

Power to the mulching head is supplied via hydraulic flow from the tracked carrier. Hydraulic drive ensures constant power to the mulching drum at all tilt angles.



Features

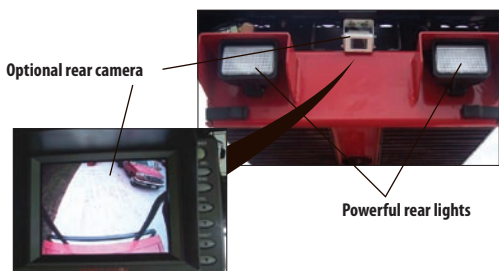
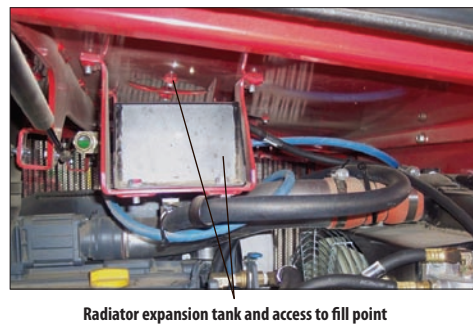
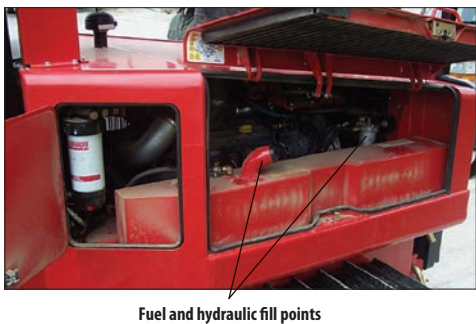
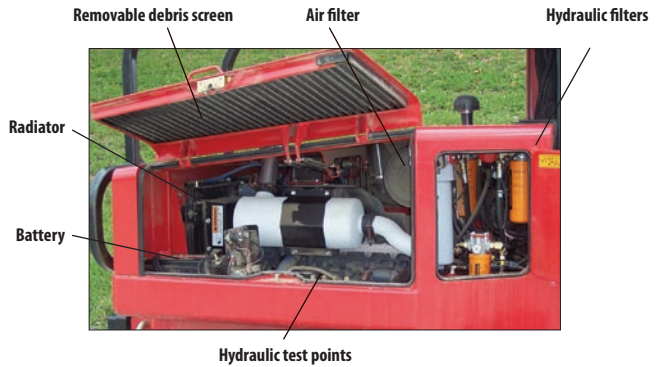
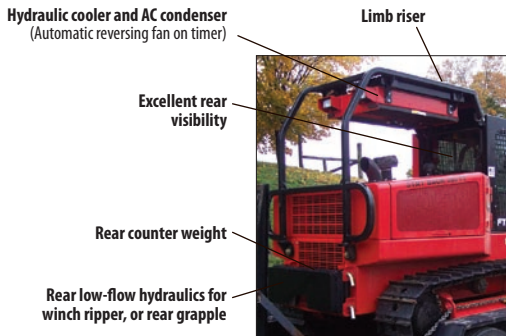
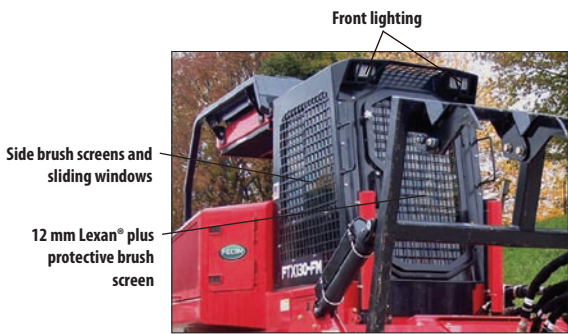
Everything about the Fecon FTX130/140 FM tracked forestry mulchers has been designed with you, the end user, in mind. Features which make your job easier, productivity increased, maintenance simpler, and your working environment safer and more pleasant.

The engine compartment is kept free from debris and dust build up with the reversible fan and removable debris screen, while service checks and periodic maintenance is made easier with excellent all-round access. Hydraulic cooling is taken care of by large cooling units mounted below the limb riser, away from dust sources. Fill points and test points are all located within easy reach.

For optimum safety, especially when working in hazardous applications such as forestry work, the operator's cab is fully protected with brush screening and Lexan® front windscreen. A limb riser mounted at the rear of the cab gives further protection against low branches.

Front and rear lighting, plus the additional safety of a rear-mounted camera (optional), gives great all-round visibility.

Rear-mounted standard or skidder winches are available as an option, offering even more versatility in the forest.



Tools

All tools are cast from high grade steel and carbide tipped for efficient mulching and long life.

The FM500HSS wide mulcher is available with either BFS26 twin hammer or BFS46/47 single hammer tools.

Tools are secured by high tensile bolts and are individually replaceable. The AHWI tool bolting method ensures that tools are held securely, do not work loose during operation and bolt threads are not subjected to damaging compression forces.

Toolholders are built extra strong to avoid breakage, even in extreme conditions.



BFS26 twin hammer



BFS46/47 single hammer – left and right hand

Specifications

FTX 130/140 – Forestry Mulcher		
Weight with FM500HSS wide mulching head	6350 kg	15,100 lb
Weight with stump grinding head	6850 kg	14,000 lb
Overall length	5410 mm	17' 9"
Cab height	2184 mm	86"
Operating height	2413 mm	95"
Overall width	1854 mm	73"
Cab width	890 mm	35"
Track gauge	1550 mm	61"
Ground clearance	380 mm	15"
Warning lights	Coolant temperature, oil pressure, alternator, intake, hydraulic oil filter, hydraulic oil level	
Gauges	Hour meter, fuel, hydraulic oil temperature, oil temperature, oil pressure, voltmeter, tachometer	
Other indicators	Seat belt, preheat	
Engine – FTX130 FM	Deutz turbocharged BF04M2012C 4 cyl. diesel, oil cooled	
Power	99 kW	133 hp
Engine – FTX140 FM	John Deere 4045H 4 cyl. diesel, liquid cooled	
Power	104 kW	140 hp
Air cleaner	Dry type dual element with pre-cleaner	
Oil filter	Spin-on type	
Fuel tank capacity	197 litres	52 US gal.
Travel speed: high range	6.8 km/h	4.2 mph
Travel speed: low range	3.9 km/h	2.4 mph
Hydraulic pressure	414/241 bar	6000/3500 psi
Implement hydraulic flow	261/57 l/min	69/15 US gpm
Lift cylinders	584 mm x 102 mm	23" x 4" dia.
Roll cylinder	89 mm	3.5" dia.
Hydraulic reservoir	114 litres	30 US gal.

INSIST ON AN AHWI!



AHWI Australia Pty Ltd
 14 Clapham Street, Beckenham
 Western Australia 6107
 Telephone: (08) 9258 9333
 Fax: (08) 9258 9111
 Email: sales@ahwi.com.au

Authorised Distributor

www.ahwi.com.au